
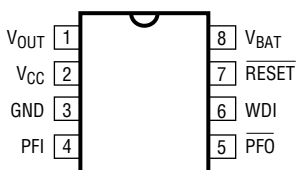


April 1997

The **LTC®690MJ8** is available in the military temperature range of  $-55^{\circ}\text{C}$  to  $125^{\circ}\text{C}$  and packaged in an 8-pin ceramic Cerdip. The Reset Voltage Threshold for the **LTC690MJ8** is shown in the table below. For complete specifications, typical performance curves and applications information, please see the **LTC690** data sheet.  LTC and LT are registered trademarks of Linear Technology Corporation.

## PACKAGE/ORDER INFORMATION

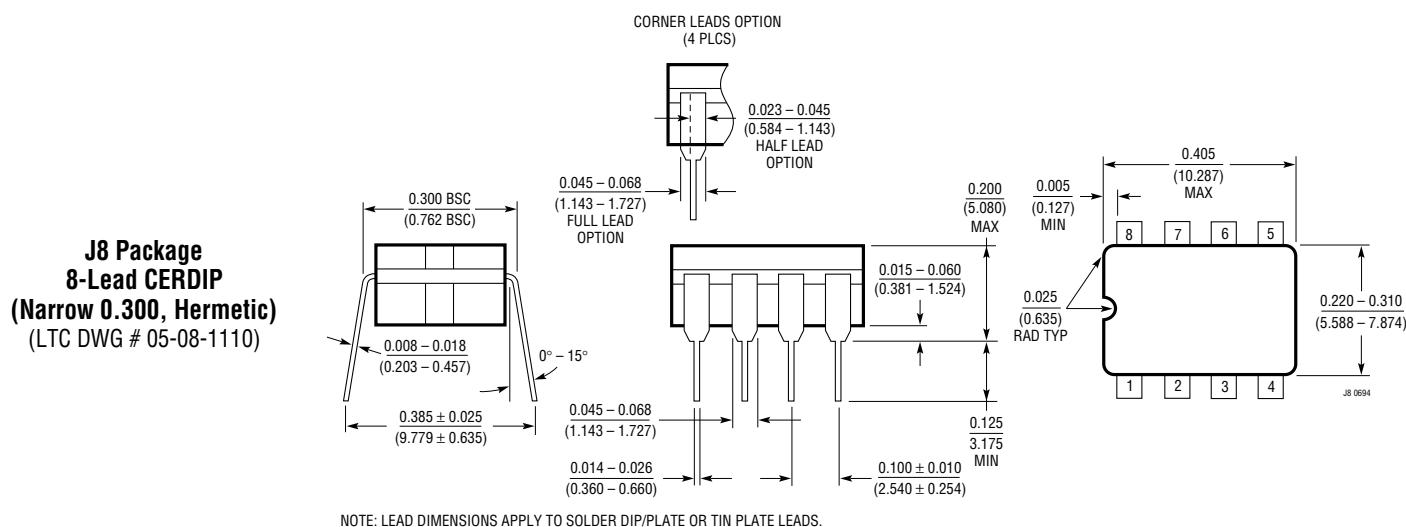
<p>TOP VIEW</p>  <p>J8 PACKAGE 8-LEAD CERDIP</p> <p>N8 PACKAGE 8-LEAD PDIP</p> <p><math>T_{JMAX} = 110^{\circ}\text{C}</math>, <math>\theta_{JA} = 100^{\circ}\text{C/W}</math> (J8)  <math>T_{JMAX} = 110^{\circ}\text{C}</math>, <math>\theta_{JA} = 130^{\circ}\text{C/W}</math> (N8)</p>	<p>ORDER PART NUMBER</p> <p>LTC690CN8          LTC690IN8          LTC690MJ8          LTC694CN8          LTC694IN8</p>
---	---

## ELECTRICAL CHARACTERISTICS

PARAMETER	CONDITIONS	MIN	TYP	MAX	UNITS
Reset Voltage Threshold	LTC690M	4.4	4.65	4.75	V

## PACKAGE DESCRIPTION

Dimensions in inches (millimeters) unless otherwise noted.



For further information regarding this specification notice contact:

Linear Technology Corporation  
 1630 McCarthy Blvd.  
 Milpitas, California 95035-7417  
 Attn: Product Marketing Manager  
 Phone: (408) 432-1900